

兔抗 THOC6 多克隆抗体

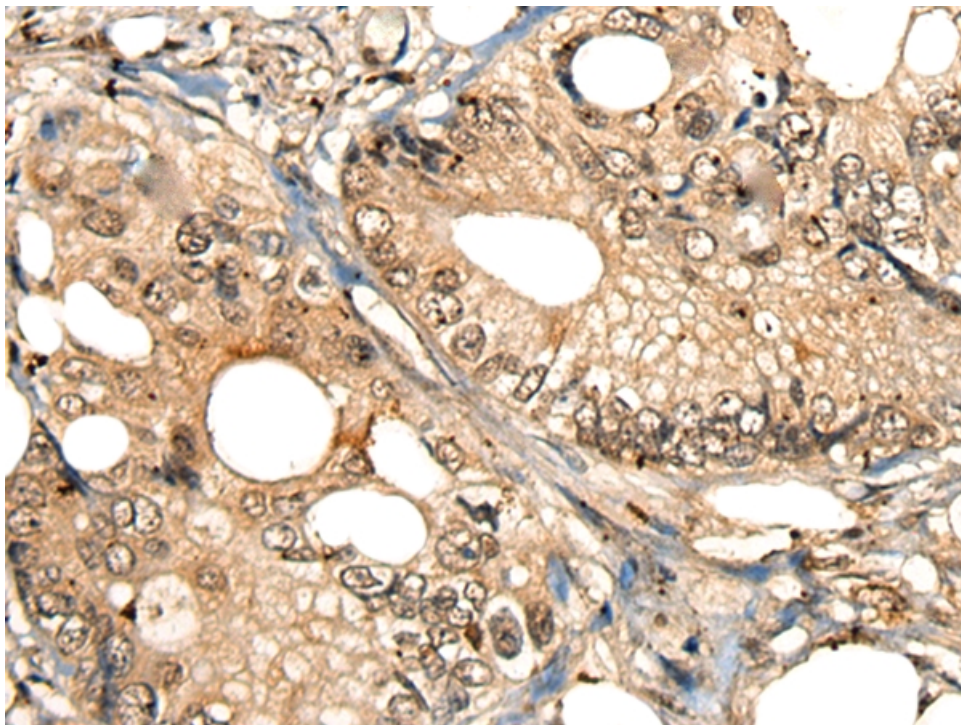
- 中文名称：兔抗 THOC6 多克隆抗体
- 英文名称：Anti-THOC6 rabbit polyclonal antibody
- 别名：THO complex 6; BBIS; WDR58; fSAP35
- 相关类别：一抗
- 储存：冷冻（-20℃）
- 宿主：Rabbit
- 抗原：THOC6
- 反应种属：Human, Mouse, Rat
- 标记物：Unconjugate
- 克隆类型：rabbit polyclonal

技术规格

Background:

Acts as component of the THO subcomplex of the TREX complex which is thought to couple mRNA transcription, processing and nuclear export, and which specifically associates with spliced mRNA and not with unspliced pre-mRNA. TREX is recruited to spliced mRNAs by a transcription-independent mechanism, binds to mRNA upstream of the exon-junction complex (EJC) and is recruited in a splicing- and cap-dependent manner to a region near the 5' end of the mRNA where it functions in mRNA export to the cytoplasm via the TAP/NFX1 pathway. The TREX c

	omplex is essential for the export of Kaposi's sarcoma-associated herpesvirus (KSHV) intronless mRNAs and infectious virus production. Plays a role in apoptosis negative control involved in brain development .
Applications:	ELISA, IHC
Name of antibody:	THOC6
Immunogen:	Synthetic peptide of human THOC6
Full name:	THO complex 6
Synonyms:	BBIS; WDR58; fSAP35
SwissProt:	Q86W42
ELISA Recommended dilution:	5000-10000
IHC positive control:	Human cervical cancer
IHC Recommend dilution:	25-100



mlbio 梅联生物
Good elisakit producers

