

## 兔抗 TRARG1 多克隆抗体

中文名称：兔抗 TRARG1 多克隆抗体

英文名称：Anti-TRARG1 rabbit polyclonal antibody

别名：trafficking regulator of GLUT4 (SLC2A4) 1; BEC-1;

相关类别：一抗

储存：冷冻（-20℃）

宿主：Rabbit

抗原：TRARG1

反应种属：Human, Mouse, Rat

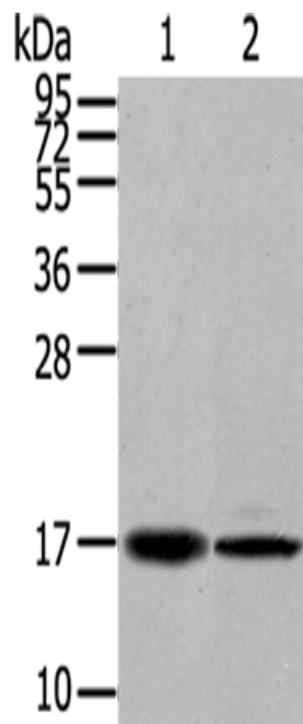
标记物：Unconjugate

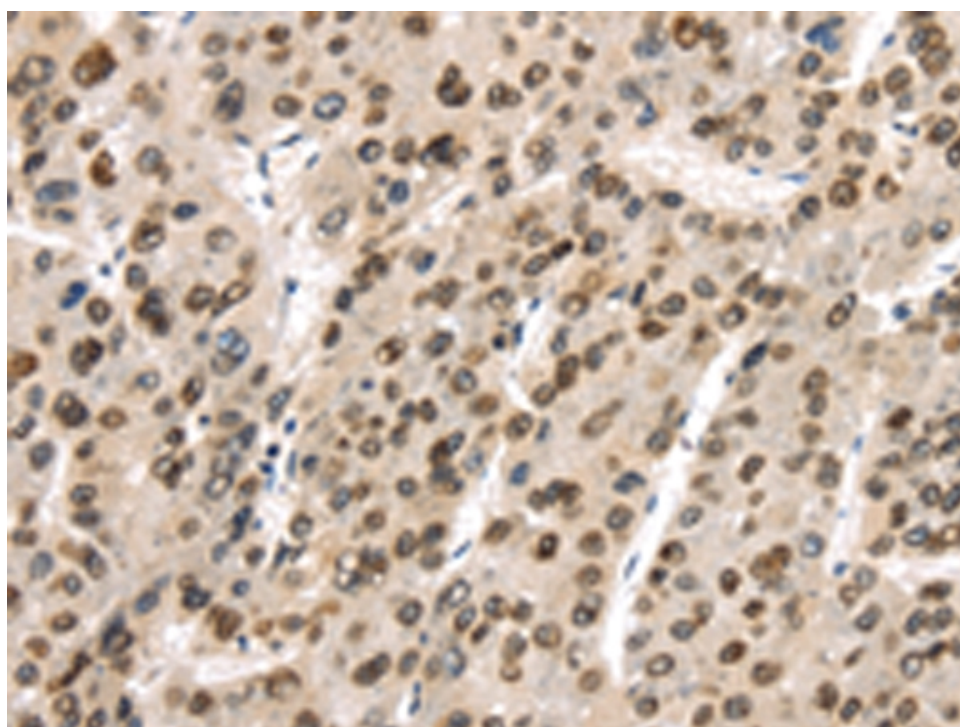
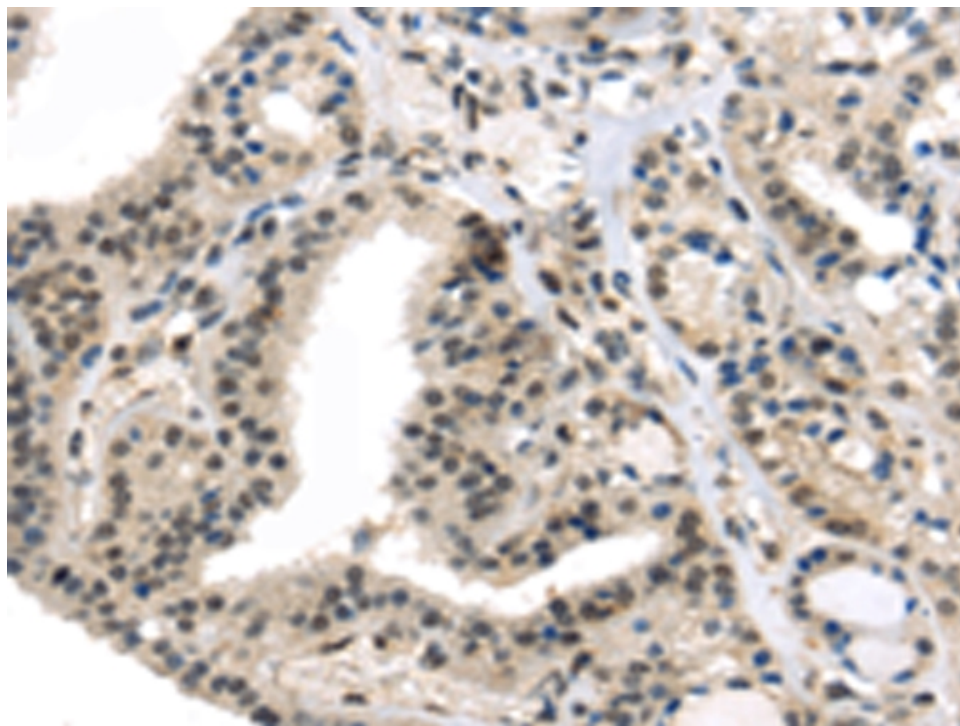
克隆类型：rabbit polyclonal

### 技术规格

<b>Background:</b>	Regulates insulin-mediated adipose tissue glucose uptake and transport by modulation of SLC2A4 recycling. Not required for SLC2A4 membrane fusion upon an initial stimulus, but rather is necessary for proper protein recycling during prolonged insulin stimulation.
<b>Applications:</b>	ELISA, IHC
<b>Name of antibody:</b>	TRARG1
<b>Immunogen:</b>	Synthetic peptide of human TRARG1
<b>Full name:</b>	trafficking regulator of GLUT4 (SLC2A4) 1
<b>Synonyms:</b>	BEC-1; DSPB1; LOST1; TUSC5; IFITMD3
<b>SwissProt:</b>	Q8IXB3

<b>IHC positive control:</b>	Human thyroid cancer
<b>IHC Recommend dilution:</b>	30-150





**mlbio** 梅联生物  
Good elisakit producers